

Call Today. For more information or detailed product specifications, call or visit us at

Fuji Xerox Asia Pacific 80 Anson Road,
#37-00, Fuji Xerox Towers Singapore 079907
Tel: XXXXXX Fax: XXXXXX

print | copy | scan

Specifications

C-Finisher (Optional)		
Stacker Type	Output Tray x 1	Collate (Offset available)/Stack (Offset available)
	Finisher Tray x 1	Collate (Offset available)/Stack (Offset available)
Paper Size/ Paper Weight	Output Tray	Maximum: 330 x 483mm, 320 x 488mm Minimum: Postcard 64gsm – 280gsm
	Finisher Tray	Maximum: 330 x 483mm, 320 x 488mm Minimum: B5 LEF 64gsm – 176gsm
Capacity of Stacker¹	Output Tray	500 sheets (A4)
	Finisher Tray	3,000 sheets (A4 LEF or smaller), 1,500 sheets (Other)
Staple	Capacity of Staple	50 sheets (≤90gsm)
	Paper Size for Stapling	Maximum: 279 x 432mm, A3 Minimum: B5 LEF
Hole Punch	Positions to Staple	Single: Front corner, Rear corner, Rear Straight, Dual
	Available Size	Maximum: 279 x 432mm, A3 Minimum: B5 LEF
Dimensions/Weight	No. of Hole Punches	2-Hole/4-Hole (3-Hole is Optional)
		772 x 650 x 1,010mm (W x D x H) When the extension tray is extended: 863 x 1,065mm (W x H)/55kg
Space Requirements²		2,038 x 781mm (W x D)

¹ When using ≤80gsm paper
² Main body + C-Finisher with Extension Tray and Bypass Tray fully extended

C-Finisher with Booklet Maker (Option)		
Stacker Type	Output Tray x 1	Collate (Offset available)/Stack (Offset available)
	Finisher Tray x 1	Collate (Offset available)/Stack (Offset available)
Paper Size/ Paper Weight	Booklet Tray x 1	Collate/Stack
	Output Tray	Maximum: 330 x 483mm, 320 x 488mm Minimum: Postcard 64gsm – 280gsm
	Finisher Tray	Maximum: 330 x 483mm, 320 x 488mm Minimum: B5 LEF 64gsm – 176gsm
	Booklet Tray	Maximum: 330 x 457mm Minimum: 216 x 279mm, A4 64gsm – 90gsm
Capacity of Stacker¹	Output Tray	500 sheets (A4)
	Finisher Tray	1,500 sheets (A4 or smaller), 1,500 sheets (Others)
Staple	Booklet Tray	20 Sets
	Capacity of Staple	50 sheets (≤90gsm)
	Paper Size for Stapling	Maximum: 279 x 432mm, A3 Minimum: B5 LEF
	Positions to Staple	Single: Front corner, Rear corner, Rear Straight, Dual
Hole Punch	Staple for the Booklet Units	15 Sheets
	Available Size	Maximum: 279 x 432mm, A3 Minimum: B5 LEF
Dimensions/Weight	No. of Hole Punches	2-Hole/4-Hole (3-Hole is Optional)
		921 x 650 x 1,010mm (W x D x H) When the extension tray is extended: 863 x 1,065mm (W x H)/86kg
Space Requirements²		2,096 x 781mm (W x D)

¹ When using ≤80gsm paper
² Main body + C-Finisher with Booklet maker with Extension Tray and Bypass Tray fully extended



**Superb Speed
and Resolution.**



Xerox, The Document Company and the stylised X are trademarks of Xerox Corporation. All other names mentioned in this brochure are trademarks of their respective companies. Whilst this information is correct at the time of printing, Fuji Xerox Asia Pacific reserves the right to change the specifications of the equipment described herein without notice.



DocuCentre C7550 I/C6550 I/C5540 I



Print ▶▶▶

The DocuCentre C7550 I/C6550 I/C5540 I is designed to be the most comprehensive digital network multifunction system. It can be easily integrated into your office network system to provide for the perfect solution to your document management needs. Whether it's copying, printing or scanning, its high performance is a definite asset. Expect a remarkable output speed of 75ppm (monochrome) and 50ppm (colour). And an equally impressive resolution of true 2,400dpi, the highest in laser colour printing. Not to mention a whole host of advanced and user-friendly features to drive up productivity and efficiency. While its security and management features puts you in control of your documents and cost effectively. Truly, it's the multifunction that answers to your demanding needs.

True 2,400dpi with Various Print Environment

The high resolution of 2,400dpi is realised in printing as well. PCL5, PCL5c, ESC/P, HP-GL/HP-GL2/RTS come standard with the system. It also supports PostScript® 3. Different settings are also available according to the document type – Standard, Photo, Presentation, Web Page, POP and CAD. In addition, for colour balance, ICC profile can be specified for more sophisticated colour adjustment.

PostScript® 3™ Kit (optional) allows various colour calibration

Colour calibration can be based on DIC standard colours, Japan Colour reproductions 2001 and JMPA colours (advertising industry standard) in addition to DIC, TOYO and PANTONE colours. The system also enables CMYK ink simulation for reproducing printed materials. This allows you to make the most of quality in-house jobs including catalogues, leaflets and newsletters.

Mailbox Print

Scanned or stored documents can be stored in a temporary mailbox and printed only when required.

Newly developed Image Processing ASIC

With the newly developed ASIC, the rendering process is much faster. Even complicated graphic data and digital camera images can be printed at a high speed of 50ppm in full colour. The system can output documents in PostScript®, TIFF and PDF formats.

ContentsBridge® enables “drag & drop” direct printing of DocuWorks and PDF/TIFF files

This feature allows you to print documents speedily at high resolution in conventional environment without having to install or open PDF or PostScript®3™.

*To print DocuWorks files, DocuWorks Viewer Light or DocuWorks 6.0 optional software must be installed in advance

Specifications

Copy		C7550 I	C6550 I	C5540 I	
DocuCentre					
Copier Type		Console Type			
Colour Capability		Full Colour			
CPU		Power PC750 600MHz			
Scanning Resolution		600 x 600dpi			
Output Resolution		2,400 x 2,400dpi			
Gradation/Printable Colour		256 levels of gray for each colour (16,700,000 colours)			
Warm-Up Time		≤2 Minutes 30 Seconds*1 (when the room temperature is 20°C)			
Original Size		Maximum: 297 x 432mm for both sheets and bound documents			
Copy Paper Size	Paper Tray 1-4	Maximum: 279 x 432mm, A3; Minimum: A5			
	Bypass Tray	Maximum: 330 x 483mm, 320 x 488mm; Minimum: Postcard			
Paper Weight*2	Tray	64gsm – 176gsm			
	Bypass Tray	64gsm – 280gsm			
FCOT*3	Mono	≤4.1 seconds (Monochrome Priority Mode: A4 LEF)			
	Colour	≤7.6 seconds (Colour Priority Mode: A4 LEF)			
Copy Magnification		<100%> 1:1 ±0.7% <Preset> 1:0.500, 1:0.707, 1:0.816, 1:0.866, 1:1.154, 1:1.414 <Variable> 1:0.25 – 1:4.00 (in 1% increments)			
Continuous Copy Speed*4	A4 LEF/ B5 LEF/A5	Mono	74.5ppm	65ppm	55ppm
		Colour	50ppm	50ppm	40ppm
	A4/B5	Mono	54ppm	47ppm	40ppm
		Colour	36ppm	36ppm	29ppm
	B4	Mono	44ppm	39ppm	33ppm
		Colour	30ppm	30ppm	24ppm
A3	Mono	37ppm	33ppm	28ppm	
	Colour	25ppm	25ppm	20ppm	
Paper Source/ Paper Capacity*5	Standard	500 sheets x 2 trays + 870 sheets + 1,140 sheets + Bypass Tray 250 sheets = 3,260 sheets			
		Maximum	5,260 sheets (Standard + HCF)		
		Optional	High Capacity Feeder (1 Tray) for 2,000 sheets		
Continuous Copy Volume*6	Maximum	9,999 copies			
Power Source		220V/240V=10A, 50/60Hz ±3%, 110V ±10% 15A+5A, 60Hz ±3%			
Maximum Power Consumption	Normal Mode	≤2.2kW			
	Low Power Mode*7	220V:165.1W, 110V:164.3W			
	Sleep Mode*7	220V:6.6W, 110V:6.3W			
Dimension		700 x 781 x 1,154mm (W x D x H)			
Weight*8		246kg	246kg	245kg	
Space Requirement*9		1,574 x 781mm (W x D)			

*1 Due to adjustment of the image quality depending on conditions of the machine or under network environments, warm-up time may exceed 2 minutes 30 seconds
*2 To use papers recommended by Fuji Xerox. Depending on the use conditions, normal printing may not be performed
*3 Same magnification, from the paper Tray 1, single sided, and output to the output tray
*4 There are cases where speed may be reduced due to adjustment of the image quality, or due to paper type, tray type and output mode
*5 When using Xerox "Business Paper"
*6 There are cases where the machine operation may temporarily suspend due to stabilisation processing of the image quality
*7 The Low Power Mode/Sleep Mode are in accordance with the International Energy Star Program measurements
*8 Machine weight measurements apply to when new toner cartridges are installed and where papers are not loaded
*9 When the bypass tray, output tray, etc. are extended to the maximum

Print				
Continuous Print Speed		Same as the machine copy speed		
Resolution	Output	2,400 x 2,400dpi		
	Data Processing	600 x 600dpi, 1,200 x 1,200dpi*1		
PDL	Standard	PCL6, PCL5c		
	Option	Adobe® PostScript® 3™*2		
Emulation/Standard		ESC/P (Supports English and Traditional Chinese Version) ESC/PK (Simplified Chinese Version only) KS/KSSM (Korean Version only) HP-GL (HP758&B), HP-GL2/RTL (HP Design Jet 750C Plus)		
Protocol		TCP/IP (Ip, SMB, Port9100), NetWare® (IPX/SPX), EtherTalk®*2*3		
Supported OS*4	Standard	Windows® 95/98/Me/NT® 4.0/2000/XP, Windows® Server™ 2003, Meta Frame 1.8/XP		
	Option	(PostScript® 3™ kit), Windows® 95/98/Me/NT® 4.0/2000/XP, Windows® Server™ 2003, Mac OS 8.1/8.5/8.5.1/8.6 or later including OS X Classic, OS X10.2.x/10.3.x (x = up to 6)		
Built-in fonts		PCL6: 81 European Type Faces, Symbol 37 sets PostScript® 3™: 136 Roman		
Memory Capacity	Standard	Page Memory: 256MB System Memory: 512MB (256MB x 2)		
	Option	Extension System Memory: 1,024 MB (512MB x 2) Maximum: 1,280MB (1.2GB)		
	Interface	Ethernet 100Base-TX/10Base-T USB 2.0*5		

*1 When text smoothing feature and line smoothing feature (monochrome) are in use
*2 When the PostScript® 3™ Kit is installed
*3 Supported OS: Mac OS 8.6 or later including Mac OS X Classic, OS X 10.2.x/10.3.x (x = up to 6)
*4 Refer to the Fuji Xerox official website for the latest information on supported OS
*5 Supported OS: Windows® 98SE/NT/2000/XP, Windows® Server™ 2003, Mac OS 8.6 or later including Mac OS X Classic, OS X 10.2.x/10.3.x (x = up to 6)

Scan		C7550 I	C6550 I	C5540 I
DocuCentre				
Scanner Type		Colour Scanner		
Document Size		Maximum: 297 x 420mm for both sheets and bound documents		
Scanning Resolution		600 x 600dpi 400 x 400dpi 300 x 300dpi 200 x 200dpi		
Scanning Halftone		RGB each colour: Input 10bit, Output 8bit		
Scanning Speed*1	Mono	100ipm (1 pass duplex scanning in monochrome: 200ipm)		100ipm
	Colour	50ipm		50ipm
Interface		Ethernet 100 Base-TX/10Base-T		
Save to Mailbox	Protocol	TCP/IP (Salutation, HTTP)		
		TIFF		
	Format	Monochrome Binary Gray Scale/ Full Colour		
Save to PC	Protocol	TIFF, JPEG		
		TWIN (Salutation) Driver-Compatible OS*2 Windows® 95/98/Me/NT® 4.0/2000/XP, Windows® Server™ 2003		
	Compliant OS*2	TCP/IP (SMB, FTP) Windows® 95/98/Me/NT® 4.0/2000/XP, Windows® Server™ 2003 Mac OS X10.1.5/10.2*4, NetWare 5.11J/5.12*4		
Format	TIFF (Compression Method: MH, MMR), DocuWorks, PDF			
	TIFF (Compression Method: JPEG), JPEG, DocuWorks, PDF TIFF (Compression Method: JPEG), JPEG, DocuWorks, PDF High-Compression DocuWorks*5, High-Compression PDF*5			

*1 Scanning speed differs depending on originals and resolution. A4 LEF FX standard original document, 200dpi, to Mailbox
*2 Refer to Fuji Xerox official website for the latest information on supported OS
*3 Only SMB protocol can be supported
*4 Only FTP protocol can be supported. Path names and file names are restricted to that of ASCII standards (1 byte characters)
*5 When the High Compression Image Kit is installed

DADF		C7550 I	C6550 I	C5540 I	
DocuCentre					
Document Feeder Type		Duplex Automatic Document Feeder			
Document Size		Maximum: 279 x 432mm, A3 Minimum: A5			
Paper Weight Capacity*1		38gsm – 200gsm (When duplexing: 50gsm – 128gsm) 250 Sheets			
Copy Feeding Speed	A4LEF (in simplex)	Mono	75dpm	65dpm	55dpm
		Colour	50dpm	50dpm	40dpm
	A4LEF (in duplex)	Mono	75ipm	65ipm	55ipm
		Colour	36ipm	36ipm	36ipm
Scan Feeding Speed	Mono	100ipm	100ipm	100ipm	
	Colour	50ipm	50ipm	50ipm	

*1 When using ≤80gsm paper

HCF (Optional)		C7550 I	C6550 I	C5540 I
Paper Size		Maximum: A4 LEF Minimum: B5 LEF		
Paper Weight		64gsm – 176gsm		
Paper Capacity*1 x No. of Feed Trays		2,000 sheets x 1 tray		
Dimensions/Weight*2		389 x 377 x 610mm (W x D x H)/29kg		
Space Requirements*3		1,574 x 781mm (W x D)		

*1 When using ≤80gsm paper
*2 Paper is not included in the weight
*3 High Capacity Feeder (1 Tray) + Main body + Output Tray + Bypass Tray fully extended

print | copy | scan

Speedy First Copy Out Time (FCOT)

The first page out time of 4.1 sec/7.6 sec (monochrome/colour) cuts waiting time especially for one-off jobs. The use of Duplex Automatic Document Feeder (DADF) achieves the first page out time of 5.8 sec/9.9 sec (monochrome/colour).

Fast warm up time

By adopting the Free Belt Nip Fuser (using a belt for fusing part to secure wider contact surface), a fast warm up time of 2 min 30 sec is realised. It only takes 30 sec to recover from the low power mode to standby mode.

Easy post processing with Electronic Pre-Collator

To deliver copies in numbered sets for distribution, multiple sets of documents can be collated as specified. This saves time and effort of hand collating after the copies are made. Also, on the DocuCentre C6550 I, monochrome documents can be copied in duplex.

*Maximum of 999 pages per job (A4 long-edge feed)

EA-HG Toner for superior copies

The Emulsion Aggregation-High Grade (EA-HG) Toner, with its smaller and finer toner particles ensures high quality and distinctly smoother images while boosting the reproduction of subtle hues of red, blue and green.

Image Repeat

This feature lets you copy the same image repeatedly to one sheet of paper to help you save on costs.

Booklet Creation

Enables one-sided or two-sided documents to be copied as a booklet. A margin can also be set and programmed to the centre of the booklet.

Extract/Delete

Similar to "cut & paste", you can extract or delete up to three locations on an image within a specified area for your copying.

Cover Insertion

Different types of papers (coloured/heavyweight) can be used and copied as the front and back covers to help the completed booklet or document stand out.

Annotation Function

Page numbers, dates, copy prohibition notes and so on can be integrated as stamps when copying. For easier segmentation of meeting materials, page numbers can also be easily assigned when compiling and copying documents submitted by different workgroups or divisions. It is also useful when handling confidential documents.

Copy on Index Papers

At the click of a button, you can copy on index papers that are frequently used as organising binders.

Multiple Page Enlargement (Poster)

This feature allows you to split and enlarge an original image on a page for copying to form a poster with simple "cut & paste".

Book Duplex Copy

To save paper use, this feature lets you split an open book original image into two pages, and make duplex copies with the same page numbering order as the original book.

Build Job

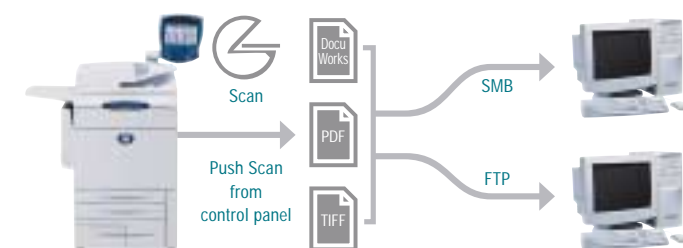
This feature reduces time and labour with its capability to group up complex jobs of different settings for each page or a segment of pages into a single process.

Scanning as easy as copying

Scanning the document and converting hardcopy originals into electronic form is now as easy as copying. Scanned documents can be converted into formats like DocuWorks file or PDF and saved into mailboxes or the server for sharing*. To convert hardcopy originals into electronic, all you have to do is connect to the office network system. Specific server system becomes unnecessary.

*Transmission via SMB/FTP is available

Save the data by specifying from the DCC bypass server



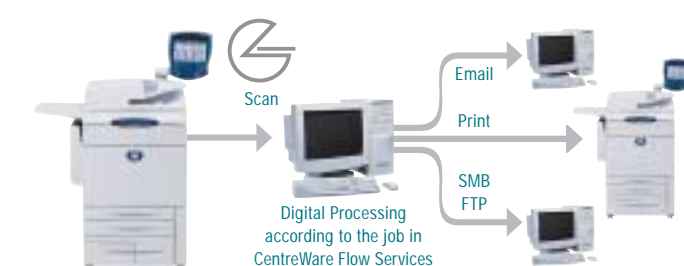
Supports WebDAV as a communication protocol

The system supports WebDAV when fetching a document from the mailbox. With the bundled CentreWare EasyOperator, you can access the scanned documents which are conveniently displayed as thumbnails.

CentreWare Flow Services for advanced document flow

CentreWare Flow Services allows scanned data (paper, digital, fax) to be processed, compressed to lighter files and delivered as email attachments or saved into the system. The scanned documents can be processed via Optical Character Recognition (OCR) and a file name can be assigned based on the OCR result for easy retrieval.

Deliver the data with sophisticated digital processing



Supports A3-size documents and simultaneous scanning of mixed-sized originals

Documents up to A3-size can be scanned. In addition, different sized documents can also be scanned together as a single job and saved as mixed sizes or a common size.



Save scanned documents to mailbox and access from Web browser

Scanned data in the mailbox can be easily accessed from CentreWare Internet Services that uses the Web browser. The list of scanned data can be accessed, exported and deleted when desired.



High speed scanning

With multiple business applications come varying degrees of scanning requirements. The new auto 2-side document feeder enables high speed scanning of 100ppm (monochrome) and 50ppm (colour)*1. In addition, by incorporating the new elevator tray, up to 250 sheets*2 of paper can be loaded. What's more, the DocuCentre C7550 I/C6550 I uses a Contact Image Sensor (CIS) to read the



back of the original document*3 to realise the speed of 100 sheets (200 pages)/min*4 for duplex copying.

*1: A4 long-edge feed at 200dpi
 *2: When using Fuji Xerox P paper
 *3: Monochrome scanning only
 *4: A4 long-edge feed at 200dpi (for DocuCentre C7550 I/C6550 I only)

High compression PDF/DocuWorks files

The system allows scanned data to be compressed to lighter files and delivered as email attachments without burden on the network. With the optional Image Compression Kit, you can extract text, photos or graphic data individually and generate each into PDF or DocuWorks* file at a suitable compression ratio for smooth distribution via the network. Even high volume colour data can be compressed into capacity equivalent to monochrome data.

*To print DocuWorks files, DocuWorks Viewer Light or DocuWorks 6.0 optional software must be installed in advance



Real-time Account Report

Real-time Account Report can be printed for tracking each function, be it print, copy, email or scan without the help of any management software.

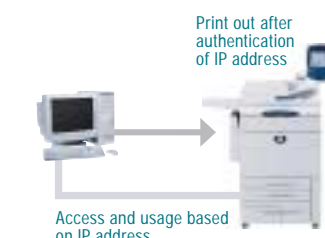
Limitation of operation by User ID registration or card certification

Limitation of functions can be specified by User ID registration or card certification using the optional D-card System. Limitation of usage, limitation by monochrome/colour for copying, printing or scanning by each user can be set as well.

Limitation of print by IP address

Restrictions can also be set based on IP address. This helps to ensure a cost-effective output environment to fit your budget.

*Via TCP/IP connection



DocuHouse outputs Device Usage to Users

The optional DocuHouse software counts copy, print, scan and fax usage of networked device. Tracking data is viewed by user, group or device at a glance. It also allows you to output monthly/daily accounting reports.

print | copy | scan

Easy Handling ▶▶▶

User friendly, easy-to-see touch-screen

An easy to use 10.4-inch colour touch-screen can be added as an option. It can be customised to let you programme frequently used features on the User Interface. This way, the operation panel can be simplified to help you improve on productivity.



Six-Way Paper Tray for high volume output

To meet bulk printing needs, the DocuCentre C7550 I/C6550 I/C5540 I has a high paper capacity of 3,010 sheets (4-cassette trays), with an additional 250 sheets from the bypass tray. By adding an optional high capacity feeder, another 2,000 sheets (1 cassette tray) can be loaded to give a maximum of 5,260 sheets of paper. This reduces the need for frequent paper refilling.



*When using 80gsm paper

Printable on a wide array of media

By adopting the Intermediate Belt Technology which uses a belt to ensure a large contact area and speedy fusion, various types of media from postcard to A3 size can be printed. Paper weightage

up to a maximum of 176gsm can be printed in duplex using the cassette tray and thick papers up to a maximum of 280gsm via the bypass tray.

C-Finisher simplifies Post-Processing

Multiple sets of documents can be easily collated and stapled automatically. With the C-Finisher, stapling and 2-hole punching of up to 50 sheets can be done at one time. The C-Finisher consists of the upper offset output tray and lower finisher tray.



Saddle Stitching C-Finisher

The Saddle Stitching C-Finisher, in addition to the key features of the C-Finisher, allows you to saddle stitch up to 15 sheets of documents at one go. It also offers centre folding of up to 5 sheets*. It consists of the offset output tray, finisher tray and booklet tray.



*When using 80gsm paper

Load-while-operating Toner Replacement

With a reserve toner tank and a dedicated door, toner replacement can be done without stopping or interrupting the job. What's more, two high capacity cartridges of black toner can be set concurrently to give approximately 60,000* sheets of printing.



*Prints on A4-sized document in 5% density

Scheduled Print

This feature enables your documents to be printed at a specified time within a 24-hour period.

Banner Sheet

Immediately before and after consecutive print jobs, a banner sheet will be printed to help you separate the jobs.

Sample Print

Enables you to print and proof read a single copy of the document before you output the remaining sets. The job will be held at the print queue until it is released.



Mobile Print

Using the optional CentreWare EasyOperator software, print setting and management by group and from any remote location become possible.

OHP (Transparency) Interleaves

This feature automatically inserts an interleaf between transparency pages/copies for your convenience.

Data Encryption

Data from the copy, print or scan function are encrypted when submitting from your PC. This prevents access and reproduction without authorisation.

Security Print

When printing highly confidential documents, Secure Print allows the data to be temporarily stored in the system and print accessible only by means of a password.



Security Watermark

To prevent unauthorised copying, you can add text like "Draft" or "Confidential" to the background of every page.

*When Copy Management Enhancement Kit is installed



Overwriting

Data stored in the hard disk are encrypted. In addition, the system can be configured to always overwrite past data and perform batch deletion at specific time. This prevents information leak from the hard disk.

Environmentally-friendly ▶▶▶

Fuji Xerox has established the "Closed Loop System" of recycling that covers the entire product life cycle from planning, development and production to disposal. An unique collection system serves as an effective recycling route whereby used products are collected as precious resources and their parts re-used or recycled for use in the integrated production line up to assembly. Hence, it's no surprise that the DocuCentre C7550 I/C6550 I/C5540 I complies and meets the stringent evaluation criteria in all categories of Fuji Xerox's "Resources-Recycling Products" label.

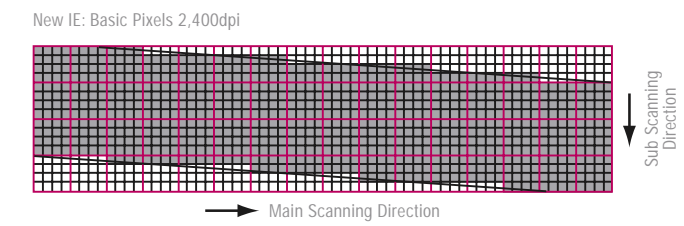
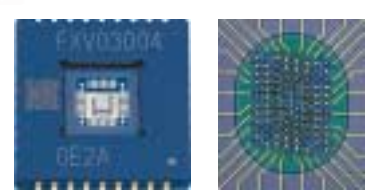


Certified Fuji Xerox recyclable product: strict quality test on all parts

Copy ▶▶▶

Superior image quality with true 2,400dpi resolution

Various technologies are incorporated to ensure true 2,400dpi resolution and high quality image comparable to offset printing. The Vertical-Cavity Surface Emitting Laser (VCSEL) multi-beam capabilities allows 32 lines to be written in a single scan. HQ (High Quality) Digital Screen MACS (Micro Accurate Control Screen) substantially improves highlight reproduction. Image Registration Control Technology (IReCT) enables highly accurate colour registration corrections. And the New Image Enhancement (NIE) process ensures smooth diagonal lines of any angle.



The basic pixels of 2,400dpi (about 10 microns) have enabled the ultrafine pixel control, thereby making it possible to smoothly reproduce line drawings

Highest speed in its class

The DocuCentre C7550 I/C6550 I/C5540 I gives you a high continuous copying speed of up to 75ppm in monochrome and 50ppm in colour (A4 long-edge feed). Such high speeds are made possible through a newly developed hybrid tandem engine shortening the paper transfer process. Together with innovative technologies like a traction drive to operate the drum and VCSEL, professional quality documents can be achieved without sacrificing on speed.